

Etbaissde[®]

www.baissde.com



壓力 液位 溫度 水質 流量 容積儀 數顯表

重慶 稿件



宝鸡百事得控制技术有限公司
Baoji baissde control technology co.,LTD

中美技术合作 cooperation with American in technology

Etbaissde[®]

DPI系列/压力/温

DPI SERIES/PRESSURE/TEMPERAT



度/液位在线仪表

URE/LIQUID LEVEL METER ONLINE



符合GMP和CIP要求

Etbaissde®

可靠/穩定/精確
中美技術合作
cooperation with American in technology

公司簡介

COMPANY PROFILE



精進電控
專業誠信 共創未來

COMPANY PR

精確/穩定/可靠

寶

寶百事得控制技術有限公司坐落於中國中部，位於西南、西北交通樞紐地陝西寶雞市，南靠秦嶺北依平原，渭水由西向東貫穿寶雞市，寶雞有漢朝時期對邦明修棧道暗道陳倉之典故，歷史上的陳倉就是現今的寶雞。

寶雞百事得控制技術有限公司是獨立法人企業，主要生產DPI系列壓力、差壓、液位、溫度sensor，一體化差壓流量計、ph計、電導率儀、數顯控制儀。公司於2014年發明并取得國家知識產權局授予的高溫衛生型壓力傳感器（sensor）的證書並連續創新設計製造符合醫藥、食品、乳製品GMP和CIP規範要求的壓力、液位、溫度傳感器、變送器。

全公司員工秉承客戶至上、品質第一的生產理念，致力於為客戶實行產品生產、技術研發、技術培訓、技術支持與服務，對各個行業層次用戶提供及時準確的在線儀表支持，保障了生產安全、穩定可靠、實現了生產設備穩定的運行，低廉的維護成本、從而滿足了各行業用戶不同工況的需要。

寶雞百事得控制技術有限公司，成立於2014年，公司擁有現代化的生產辦公設施，專利技術，完善的檢測設備，標準的生產工藝，服務於食品、制藥、釀酒、飲料、乳製品。

Baoji Baissde control technology co., LTD. is located in the southwest, north-west transport hub in Baoji city in ShaanXi province. South by Qin Ling in plain, WeiShui runs through from west to east, baoji baoji has the reputation of the han dynasty period, liu bang re-enacting, so their time is now in baoji.

Baoji Baissde control technology co., LTD. is a independent legal enterprise, - Main production DPI series pressure, differential pressure, liquid level, temperature sensor, the integration of differential pressure flow meter, ph meter, conductivity meter, digital display control instrument. High temperature in 2014 the company invented health type pressure sensor (sensor) on the base of continuous innovation in design and manufacture of medicine, food, dairy, GMP and CIP specification required pressure, liquid level sensor, transmitter.

All employees adhering to the concept of customer first, quality first production, is committed to implement the product production, technology research and development, technical training, technical support and service, industry level and to provide timely and accurate online instrument support, to ensure the safety of the production, stable and reliable, has realized the production equipment and stable operation, low maintenance cost, so as to meet the needs of different working conditions, the industry users.

Baoji Baissde control technology co., LTD., was founded in 2014, the company has modern office facilities, patent technology, perfect testing equipment, standard production process, serve the food, pharmaceutical, brewing, beverage, dairy products.

品質卓越 目標高遠

OFILE



DPI40系列

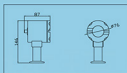
DPI系列壓力、液位產品對照表

DPI series pressure, liquid level products table

DPI壓力、液位外形圖、安裝接口圖

DPI pressure, liquid level outline drawing, installation interface diagram

DPI40S衛生隔膜壓力、液位
DPI40S diaphragm pressure, liquid level

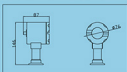


DPI40S 外形尺寸圖
Shape dimension figure As follow



接口尺寸圖/The interface size chart As follow

DPI41S衛生隔膜高溫壓力、液位
DPI41S high temperature diaphragm pressure, liquid level

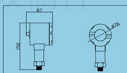


DPI41S 外形尺寸圖
Shape dimension figure

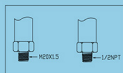


接口尺寸圖/The interface size chart

DPI40SL直裝式壓力、液位變送器
DPI40SL Straight type pressure, liquid level transmitter

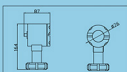


DPI40SL 外形尺寸圖
Shape dimension figure

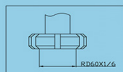


接口尺寸圖/The interface size chart

DPI40H衛生隔膜壓力、液位變送器
DPI40H diaphragm pressure, liquid level transmitter



DPI40H 外形尺寸圖
Shape dimension figure

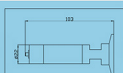


接口尺寸圖/The interface size chart

DPI40Z衛生隔膜壓力、液位變送器
DPI40Z diaphragm pressure, liquid level transmitter



DPI40Z 外形尺寸圖
Shape dimension figure



接口尺寸圖/The interface size chart

▶ DPI系列sensor應用

適用於：食品、飲料、生物、啤酒、白酒、乳製品、醫用水處理、制業設備、純水管路中的果汁、果醬、啤酒、酒精、牛奶、醫用制水生產過程的壓力、液位、溫度在線測量。

工作原理：

ETbaisdde寶勤百事得公司推出的DPI系列壓力、液位smart sensor採用多晶矽傳感器、經過信號轉換，溫度補償、綫性修正，數據處理讓sensor輸出標準的4-20mA模擬信號，可通過表頭按鍵對sensor進行組態，零位調節，量程遷移，測量單位變換等智能化調節，極大的方便了用戶使用。

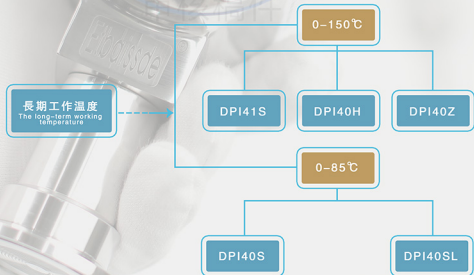
▶ DPI series sensor applications

Suitable for: food, beverage, biological, beer, wine, dairy products, pure water pipeline of water treatment, pharmaceutical equipment, medical, milk, fruit juice, fruit juice, beer, alcohol medical system pressure, liquid level, temperature of the water production process online measurement.

Working principle:

BaoJi Baisdde launched DPI series pressure, liquid level smart sensor using polycrystalline silicon sensor, signal conversion, temperature compensation, linear correction, the data processing for sensor output standard 4-20 mA analog signal, can through the column heading for sensor configuration, zero adjustment, range migration, intellectualized control unit of measure conversion, greatly convenient for users.

▶ DPI系列sensor產品技術/Product technology



▶ 滿量程精度/Full scale accuracy

精度: % F.S	0.075	0.1	0.25	0.5
型號Model				
DPI40S	✓	✓	✓	—
DPI41S	✓	✓	✓	—
DPI40SL	—	✓	✓	✓
DOI40H	—	✓	✓	✓
DPI40Z	✓	✓	✓	✓

長期穩定性優于: $\pm 0.2\%$ F.S 兩年;

供電: 12.5–36Vdc 標準: 24Vdc;

模擬緩性輸出: 4–20mA;

過壓極限: 滿量程的1.6倍;

位置影響: $\pm 0.5\%$ 通過按鍵可消除不影響測量精度;

符合NEMA 4X/IP66, 電磁兼容性 (EMC); 符合CENELEC和IEC;

符合FM認證

信號傳輸: 用多芯雙絞線, 通訊距離最大可達1.5Km, 通訊距離因電纜類型而異

振動影響: 在任何方向上振動頻率20–2000Hz時, 變化量小於 $\pm 0.02\%$ F.S

衝擊影響: 任何方向100G衝擊11ms後變化量小於 $\pm 0.02\%$ F.S

位置影響: 在任何角度安裝會產生 $\pm 0.05\%$ F.S 零位偏移, 對量程無影響

測量範圍: -1bar–100bar 任意定制滿量程

產品特點: 精度高、穩定性好、體積小重量輕 (2.5Kg)、無移動部件、抗衝擊、抗振動、反極性保護、安裝方便、密封性好、獨特的無滲漏技術

管座材料: 316

膜片材料: 316L

電子殼外殼: 304精鍍

表面處理: 鏡面拋光

壓力接口: $\Phi 50.5\text{mm}$ 卡箍式、M20X1.5外螺紋、1/2NPT–18外螺紋

電氣接口: M12x1快速4針連接器

防護等級: IP67

防爆等級: 符合ExiaIICT6

Long term stability is better than: plus or minus 0.2% F.S for two years

Power supply: 12.5–36 VDC standards: 24 VDC;

Simulation of linear output: 4–20 mA;

Overvoltage limit: Full range of 1.5 times;

Location: Plus or minus 0.5% by buttons can eliminate does not affect the accuracy of measurement;

In accordance with NEMA 4 x/IP66, electromagnetic compatibility (EMC);

In line with the CENELEC and IEC;

In the American FM certification

Signal transmission: Using multi-fiber twisted-pair cable, communication distance of 1.5 Km, biggest communication distance owing to the different type of cable

Vibration frequency in any direction: 20–2000 hz, The variation is less than $+/- 0.02\%$ F.S

Impact: Any direction changing quantity is less than 100 g shock after 11 ms plus or minus 0.02% F.S

Location: Installed at any Angle will produce plus or minus 0.05% F.S zero offset, has no impact range

Measuring range: 1 bar – 100 bar any custom full scale

Product features: High accuracy, good stability, small volume, light weight (2.5 Kg), no moving parts, impact resistance, resistance to vibration, reverse polarity protection, easy installation, good sealing, unique technology without leakage

Tube material: 316

Diaphragm material: 316 L

Electronic chamber shell: 304 precision casting

Surface treatment: Mirror polishing

Pressure interface: \varnothing 50.5 mm clamp, M20X1.5, 1/2 NPT to 18 external thread

Electrical interface: M12x1 fast 4 pin connector

Protection grade: IP67

Explosion-proof grade: ExialICT6

審核稿件



變送器接線圖 (The wiring diagram in the transmitter)



▶ 產品選型列表/Product selection list

■ 選型系列/Selection in the column: DPI40S-EK11KAP-F

型號 Model	規格代 Specifications and code	說明：壓力、液位變送 Note: pressure, liquid level transmitter
DPI40S	衛生型 Type of health
DPI41S	高溫衛生型 High temperature type health
DPI40SL	螺紋式型 Screw type
DPI40H	活接頭衛生型 Union of health
輸出型號/Output type	-E	4-20mA
標定單位/Calibration unit	K	KPa
	B	bar
	H	mH2o
	M	MPa.
測量量程/Measuring range	1	0-35KPa 0-0.35bar 0-35mH2o
	2	0-100KPa 0-1bar 0-10 mH2o
	3	0-600KPa 0-6bar
	4	0-2.5MPa 0-25bar
接液材質/Answer the liquid material	1	傳感器膜片The sensor diaphragm 過程材質 Process material 316L 316
過程接口/The process interface	k	50.5mm卡箍式 clamp
	L	M20 x 1.5外螺紋External thread
	L1	1/2NPT-18 外螺紋External thread
電氣接口/Electrical interface	A1	直連
	A2	90° 連接
防護等級/Protection grade	P	IP67
電氣安全/Electrical safety	-C	CSA鑒定
	-F	FM認證
	-S	SAA認證
	-A	3A符合GMP標準

■選型示例/Selection in the column: DPI40Z-EK11KAP-F

型號 Model	代碼 code	說明：壓力、液位變送 Note: pressure, liquid level transmitter
DPI40Z	精小型直裝 Fine small stow
輸出型號/Output type	-E	4-20mA
標定單位/Calibration unit	K	KPa
	B	bar
	M	MPa
測量量程/Measuring range	1	-100-100KPa 0.1bar-1bar
	2	0-600KPa 0-6bar
	3	0-2.5MPa 0-25bar
接液材質/Answer	1	傳感器膜片 The sensor diaphragm 過程材質 Process material 316L 316
過程接口/The process interface	k	50.5mm卡箍式 clamp
電氣接口/Electrical interface	A1	直連
	A2	90° 連接
防護等級/Protection grade	P	IP67
電氣安全/Electrical safety	-C	CSA鑒定
	-F	FM認證
	-S	SAA認證
	-A	3A符合GMP標準



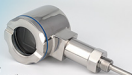
WZPK系列

溫度傳感器、變送器產品對照表

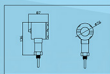
The temperature sensor, transmitter products

溫度傳感器、變送器結構圖總匯

Reservoir temperature sensors, transmitter structure of the system



螺紋連接圖片
Threaded connections



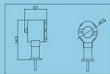
WZPK-S結構、尺寸圖 The structure, size chart



探頭直徑 感溫直徑	M27X2	M27X1.5
L=	30	30
L=	50	50
L=	80	80
L=	100	100
L=	150	150



卡盤式連接 ≤ 50.5
Clamp connection ≤ 50.5



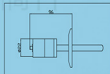
WZPK-S結構、尺寸圖 The structure, size chart



探頭直徑 感溫直徑	≤ 50.5
L=	30
L=	50
L=	80
L=	100
L=	150



WZPK-L
卡盤式連接 ≤ 50.5
Clamp connection ≤ 50.5



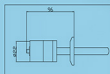
WZPK/WZPK-L結構、尺寸圖 The structure, size chart



探頭直徑 感溫直徑	≤ 50.5
L=	30
L=	50
L=	80
L=	100
L=	150



WZPK-X
卡盤式連接 ≤ 25.4
Clamp connection ≤ 25.4



WZPK/WZPK-X結構、尺寸圖 The structure, size chart



探頭直徑 感溫直徑	≤ 25
L=	30
L=	50
L=	80
L=	100
L=	150

▶ WZPK系列溫度傳感器、變送器技術規範

主要應用範圍及原理：

鉗裝鉑熱電阻是一種溫度傳感器，它比裝配式鉑熱電阻式電阻直徑小，易彎曲抗震性好，適合安裝在裝配式鉑熱電阻無法安裝的場合，本公司採用美國baisse技術生產的WZPK系列鉗裝熱電阻具有精度、靈敏度、熱響應時間快，質量穩

定，使用壽命長等優點。鎢裝熱電阻外保護套採用不銹鋼，管內充滿高密度氧化物質絕緣體，它具有很強的抗污染性能和優良的機械強度，適合安裝在環境惡劣的場合。

鎢裝熱電阻可用于測量-70~600℃範圍內溫度，可直接用銅導線和二次儀表相連接使用，由於它具有良好的電阻輸出特性，可對各種測溫要求條件進行溫度測量，提供精確的溫度變化輸出信號，符合JB/T8622-1997標準。

Main application range and principle:

Armoured platinum thermal resistance is a kind of temperature sensor, it is smaller than the diameter of a fabricated platinum thermal resistance type resistance, flexible good vibration resistance, suitable for installation in the case of fabricated platinum thermal resistance can't install, produced by our company in U.S. baissde technology WZPK series armored thermal resistance with precision, heat sensitivity, fast response time, stable quality, long service life, etc. Armored cases outside thermal resistance of stainless steel, tube filled with high density oxidation material insulation, it has a strong pollution resistance and excellent mechanical strength, suitable for installation in harsh environment.

Armored thermal resistance can be used to measure -70~600℃ temperature range, can be directly connected with copper wires and secondary instrument use, because it has good resistance output characteristic, temperature measurement can be made to the various temperature requirements conditions, to provide accurate temperature change of the output signal, conform to the standard JB/T8622-1997.

電氣接線圖/Electrical wiring diagram



一體化溫度變送器



PT100溫度傳感器

② 測量範圍及允許差/Measuring range and allow the poor

類型 type	分度號 Degree	測量範圍℃ Measuring range ℃	允許偏差℃ Allowable deviation ℃
鉑熱電阻PT100	Pt100	-70- +600	A級：± 0.15 B級：± 0.30

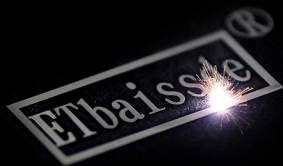
▶ 插入深度代碼表 Insert depth code table

代碼\插入深度mm	A30	B50	C80	D100	E150
卡盤直徑mm					
50.5	√	√	√	√	√
25.5	√	√	√	×	×

▶ 選型系列/Selection in the column: WZPK-14BKT(80)P

型號 Model	規格代碼 Specifications and code	說明: Note:
WZPK-L	溫度傳感器 The temperature sensor
WZPK-X	溫度變送器 Temperature transmitter 輸出: 4-20mA
WZPK-S	帶顯示溫度變送器 Show the temperature transmitter
測量範圍Measuring range	1	-70-600℃
保護管材質Protecting tube material	4	304
	6	316
插入管直徑pipe diameter	A	Φ6
連接方式The connection method	k	50.5mm卡盤式 Chuck type
	F	25.5mm卡盤式 Chuck type
	M	M20 × 1.5
	N	1/2NPT-18
插入深度Insert depth	H	見規格表代碼 See specification code
防護等級Protection grade	P	IP66
輸出信號	E.....	4-20mA
	T.....	PT100
電氣接口	A1.....	直連
	A2.....	90° 連接

审核稿件





丁 8 874

4 8 076

ISO 9001/14001 质量管理体系认证



宝鸡百事得控制技术有限公司

BAISSDE CONTROL TECHNOLOGY CO.,LTD

地址:宝鸡高新大道195号创意大厦A座10-1

电话:0086 917-3551227

传真:0086 917-3551711

网址:WWW.baissde.com

E-mail:www.baissde@126.com

邮编:721014

服务电话: 187-2971-7095